

Downloading & Installing the Keil IDE and STM32F103 package

Sepehr Naimi

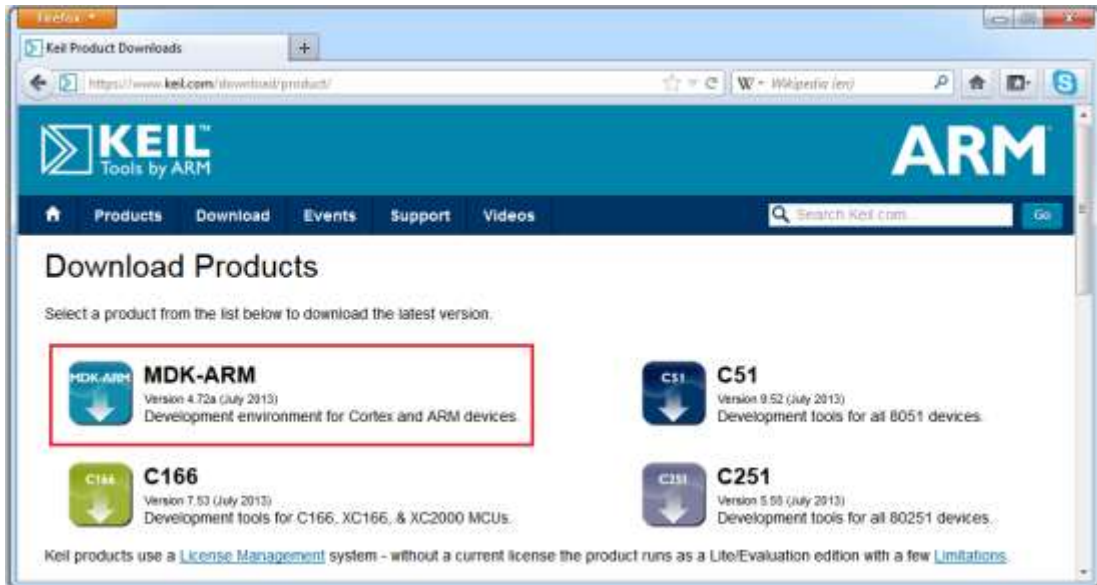
10/04/2019



www.NicerLand.com

Downloading and installing the Keil IDE

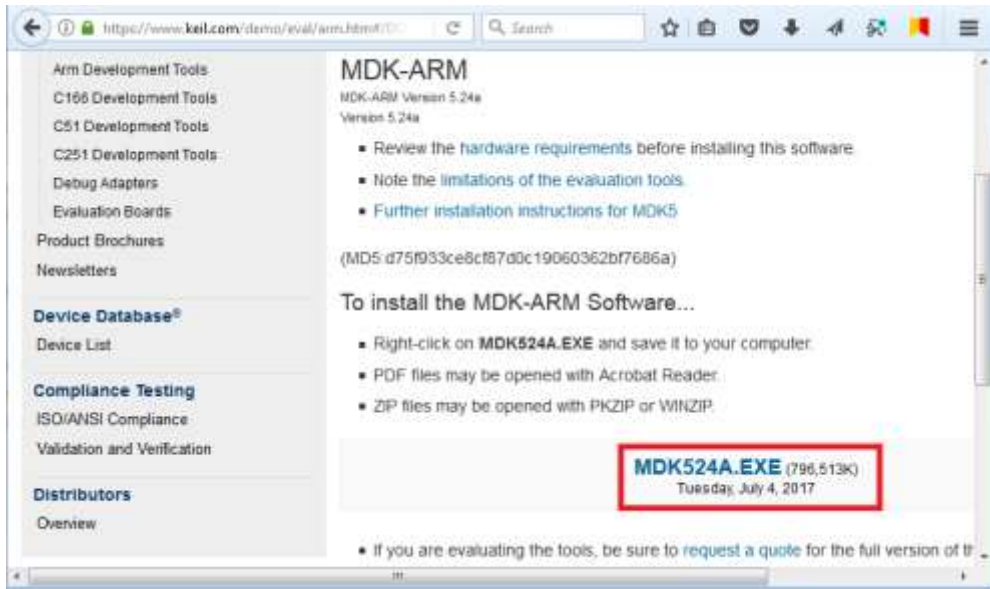
1. Click on the following link:
<https://www.keil.com/download/product/>
2. Choose MDK-ARM.



3. Fill out the form and then click on the **submit** button, at the bottom of the page.



4. Click on the **MDKxxx.EXE** link.



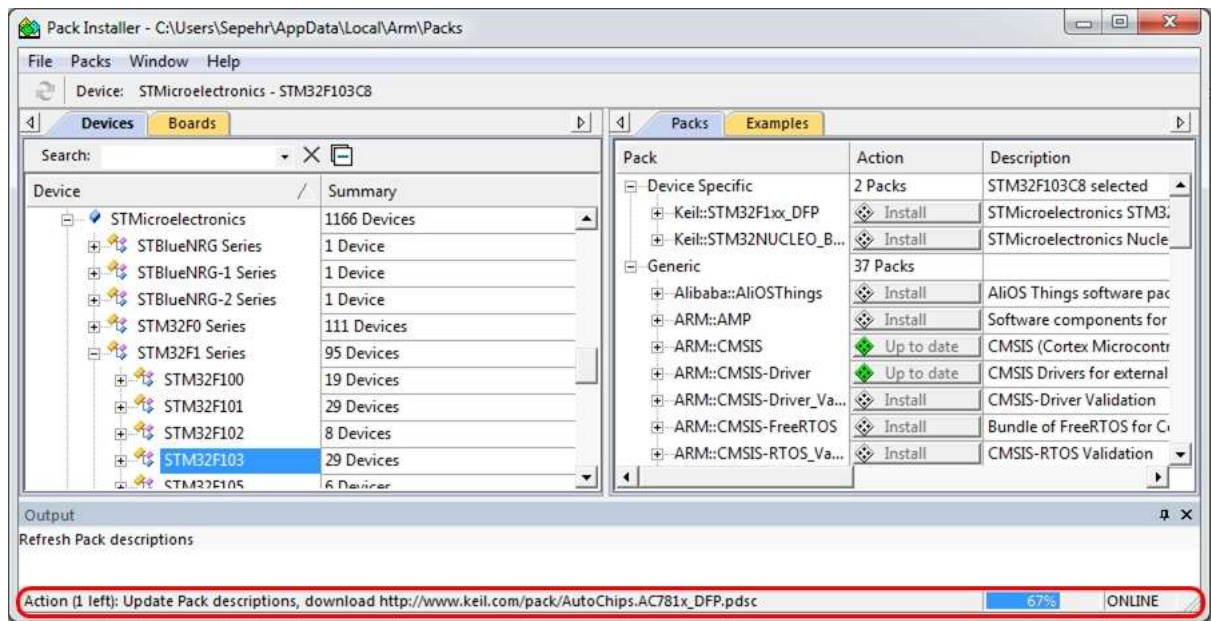
5. Choose **Save**.



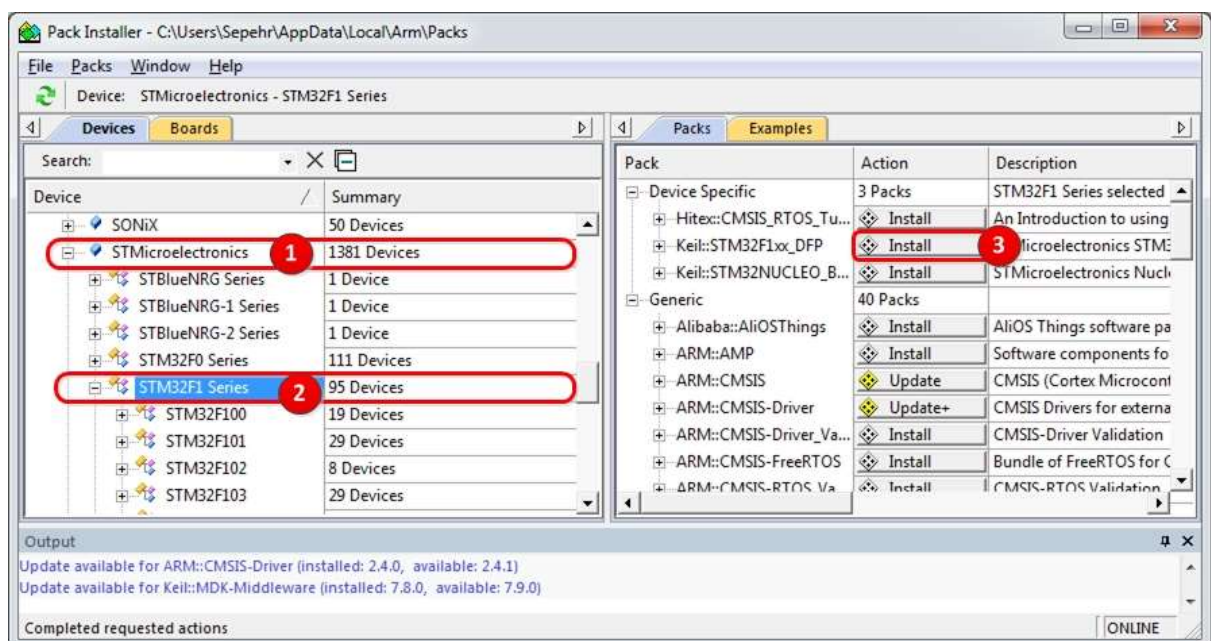
6. Execute the downloaded file. Installing the software is straight forward; choose the **Next** button in each step, until the setup finishes.

Installing the STM32 packages using Pack Installer

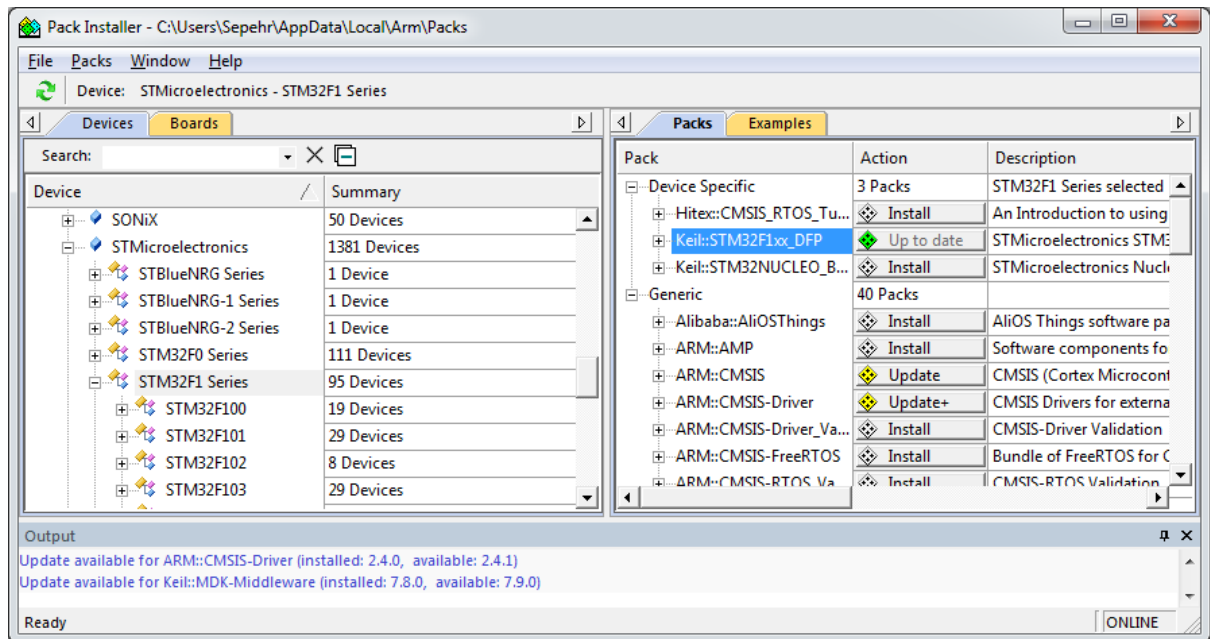
- When the Keil installation finishes and you press the *Finish* button, the *Pack Installer* software opens automatically. In the pack installer, you can install the packages for different Arm microcontrollers. When the pack installer opens, it downloads some packages. Wait until the download of the packages finishes.



- Now, from the left tree expand the *STMicroelectronics* by clicking on it and choose *STM32F1 Series*. In the right tree click on the *Install* button which is next to *Keil::STM32F1xx_DFP*.



- Wait until the installation finishes and the *Install* button changes to "Up to date". Now, close the Pack Installer.



- Copy the contents of **CMSIS include** directory into the **Device include** directory. To find the CMSIS include directory search core_cm3.h. It should be located somewhere like: "C:\Users\Sepehr\AppData\Local\Arm\Packs\ARM\CMSIS\5.5.1\CMSIS\Include". To find the Device include directory search stm32f10x.h. Its path is something like "C:\Users\Sepehr\AppData\Local\Arm\Packs\Keil\STM32F1xx_DFP\2.3.0\Device\Include". Now, copy the contents of "CMSIS\Include" directory to the "Device\Include" directory.